

Natural Glow

Start by applying the appropriate Dr. Hauschka **Foundation** for your skin tone. If necessary, dab **Concealer** onto the desired areas and blend the edges. Apply **Compact Powder** to fix your make-up base and reduce shine.



1. Apply the beige shade from **Eyeshadow Palette 01** to the entire eyelid. Apply a little of the dark brown shade to the moveable lid (i.e. up to the crease).

2. Line the upper and lower lash lines with **Eye Definer 08** and gently blend.

3. Apply **Volume Mascara 05** to the upper lashes and use the **Eye & Brow Palette** to shape and accentuate the eyebrows.

4. With the Blusher Brush, apply the two shades of **Blush Duo 04** to the cheek area.

5. Finish by gently dabbing some **Lipstick 20** onto the lips.

Eyeshadow Palette Duo 01 ● ●

Eye Definer 08 ●

Volume Mascara 05 ●

Blush Duo 04 ● ●

Lipstick 20 ●



Glamorous Glow

Start by applying the appropriate Dr. Hauschka **Foundation** for your skin tone. If necessary, dab **Concealer** onto the desired areas and blend the edges. Apply **Compact Powder** to fix your make-up base and reduce shine.



1. Apply the beige shade from **Eyeshadow Palette 01** to the entire eyelid.

2. Apply the dark brown shade from **Eyeshadow Palette 01** to the eyelid crease and the outer corner of the eye and softly blend up to the eyebrow.

3. Apply **Eye Definer 08** to the outer corner of the eye, the waterline and the upper and lower lash lines and softly blend.

4. Apply plenty of **Volume Mascara 05** to the upper and lower lashes. Shape and accentuate the eyebrows as desired with the **Eye & Brow Palette** and fix with the **Brow & Lash Gel**.

5. Emphasise the cheek area by applying the two shades of **Blush Duo 04**, following the contours of your individual face shape. You can also use to highlight the temples, forehead and nose.

6. Finish by applying plenty of **Lipstick 20** to the lips.

1.



2.



3.



4.



5.



Eyeshadow Palette Duo 01 ● ●

Eye Definer 08 ●

Volume Mascara 05 ●

Blush Duo 04 ● ●

Lipstick 20 ●

Limited Edition Make-up

Volume Mascara

This intense moss green Volume Mascara creates thick, sweeping lashes for seductive eyes.

Eye Definer

Colour-coordinated with the mascara, our soft eyeliner glides on to easily accentuate the individual beauty of your eyes.

Lipstick

With its vibrant shade of nude and its soft shine, our lipstick provides the perfect finish for an elegantly natural look.

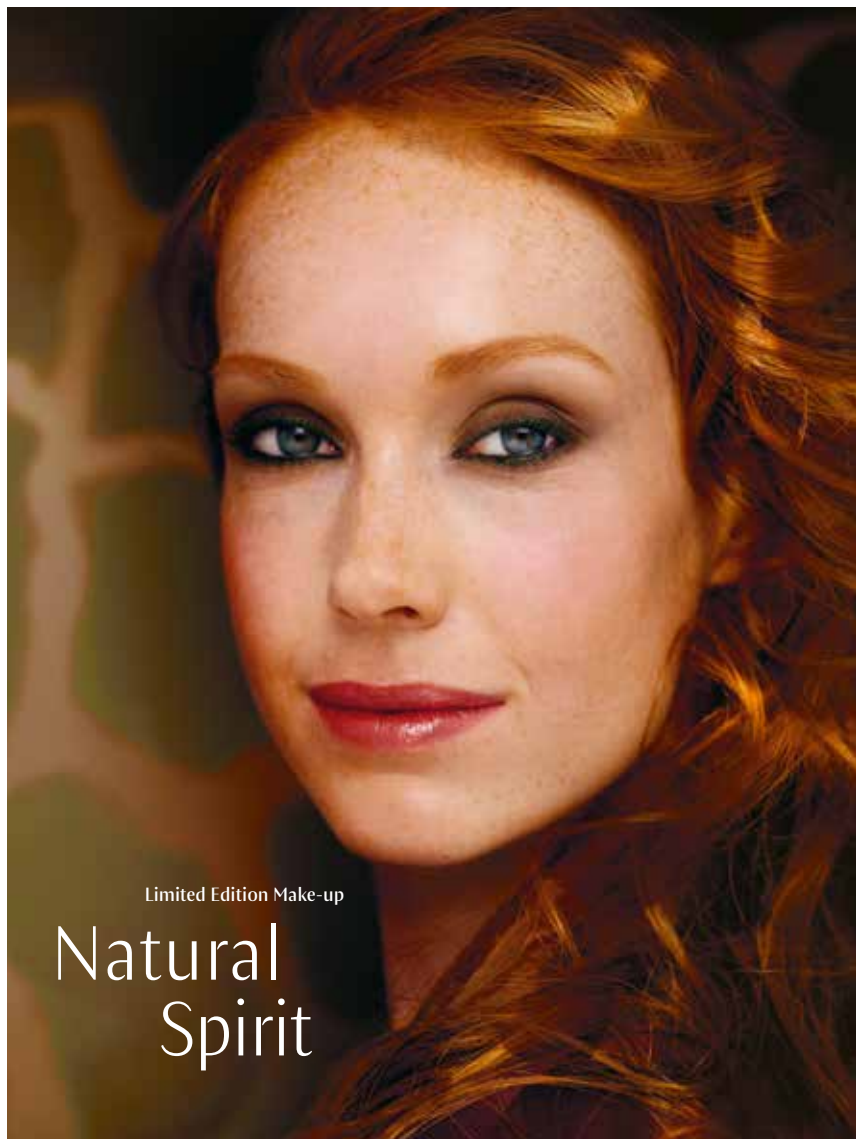


Dr. Hauschka



Limited Edition Make-up

Natural
Spirit



Our **Eyeshadow Palette Duo** combines a matt, warm brown and a subtly shimmering beige. The silky, contrasting colours give added depth and expression to the eyes.

Our **Blush Duo** shapes the face with shades of apricot and rosé adding a gorgeous glow to every complexion.



With feet on the earth and eyes on the horizon:

In the great outdoors, our thoughts have endless space to wander. The earthy colours in our new Limited Edition “Natural Spirit” are as inspiring as the view across a wide open landscape. Shimmering dark green, deep brown and delicate pink radiate power and tranquillity. For an individual look full of joyful grace, confident serenity and natural elegance.



Dr. Hauschka



1



2



3



4



5



6



7



We used the following products to create this Glamorous Glow look:

1 Eyeshadow Palette Duo 01 Limited Edition 2 Eye Definer 08 Limited Edition

3 Volume Mascara 05 Limited Edition 4 Eye & Brow Palette 5 Brow & Lash Gel

6 Blush Duo 04 Limited Edition 7 Lipstick 20 Limited Edition

Dr. Hauschka



1



2



3



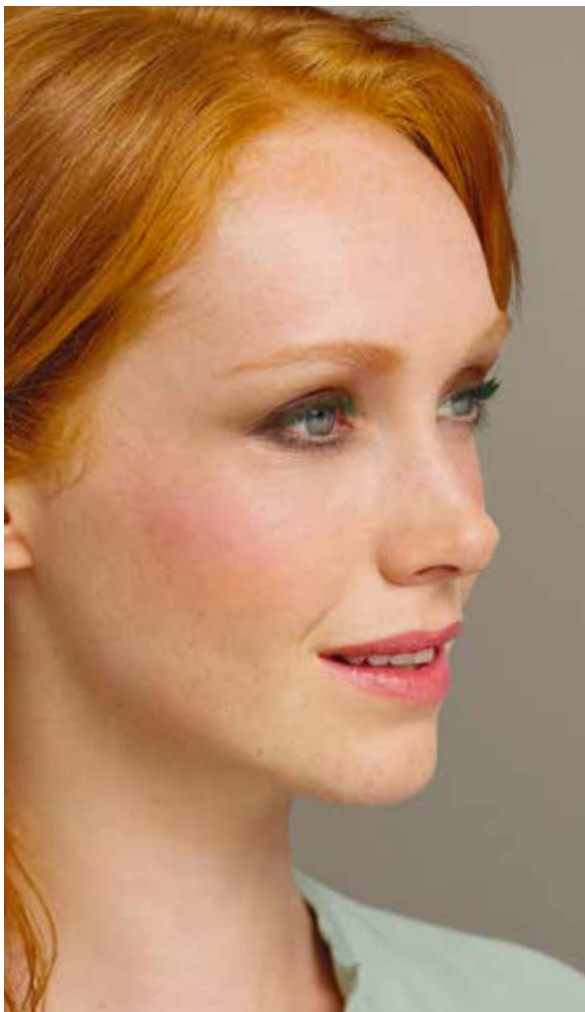
4



5



6



We used the following products to create this Natural Glow look:

1 Eyeshadow Palette Duo 01 Limited Edition 2 Eye Definer 08 Limited Edition

3 Volume Mascara 05 Limited Edition 4 Eye & Brow Palette 5 Blush Duo 04

Limited Edition 6 Lipstick 20 Limited Edition